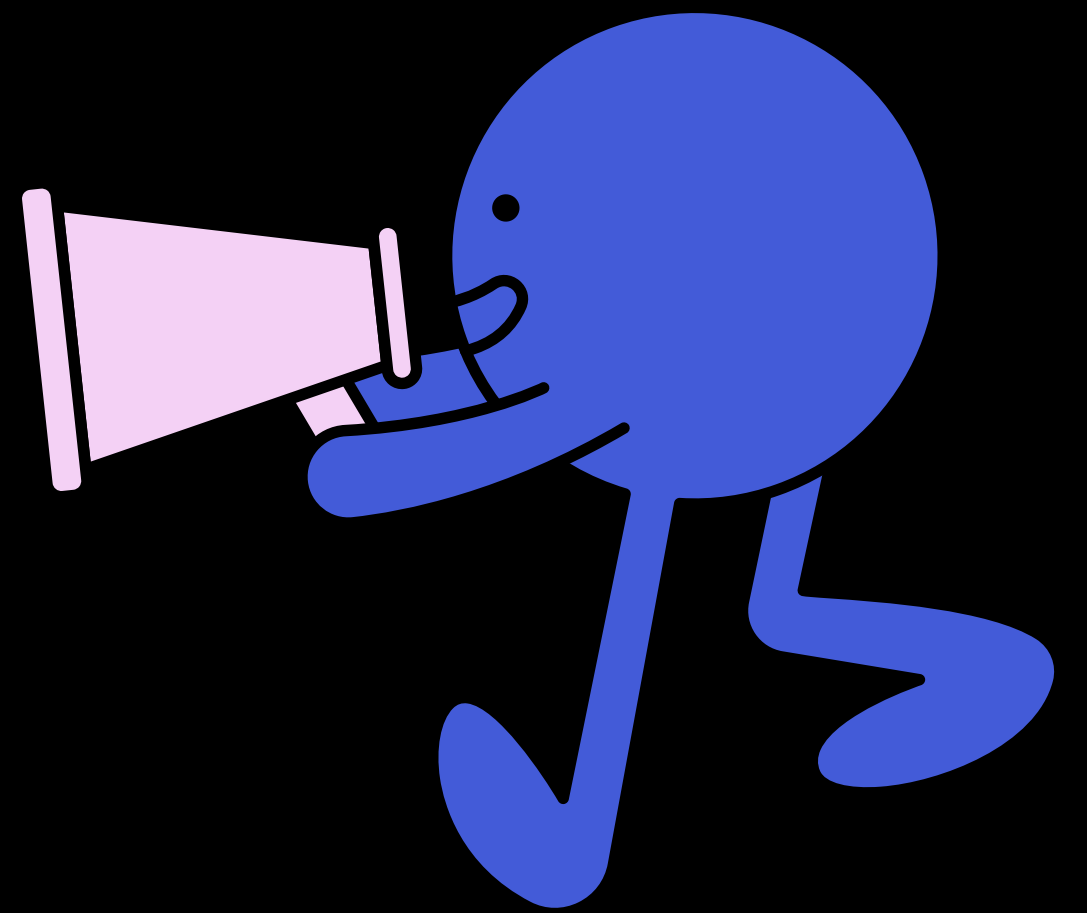


# MULTIPLICATION CHART TRICKS

2

add the number to itself (in other words, double it)

Ex:  $2 \times 9 = 9 + 9 = 18$



4

double, then double again

Ex:  $4 \times 9$ : double 9 is 18, double 18 is 36

5

Cut in half, then times 10

Ex:  $5 \times 6$ : Half of 6 is 3, then times 10 for 30

6

when you multiply 6 by an even number, they both end in the same digit.

Ex:  $6 \times 2 = 12$ ,  $6 \times 4 = 24$ ,  $6 \times 6 = 36$ , etc

9

is  $10 \times$  the number minus the number.

Ex:  $9 \times 6 = 10 \times 6 - 6 = 60 - 6 = 54$

Children's  
Poster  
Sample